

Leishmaniasis

ALGERIA

2014

Published in July 2016
Updated in September 2016

Country General Information (WHO, 2013)

Total population:	39,208,000	Age group <15/>14 years, %:	28% / 72%
Gender (% F/M):	49.4% / 50.6%	Life expectancy at birth in years (F/M):	73 / 69
GDP (PPP int \$):	12 990	Number of 3rd sub-national administrative level divisions, name:	1541, Baladiyah
Income status:	Upper middle		

Epidemiology

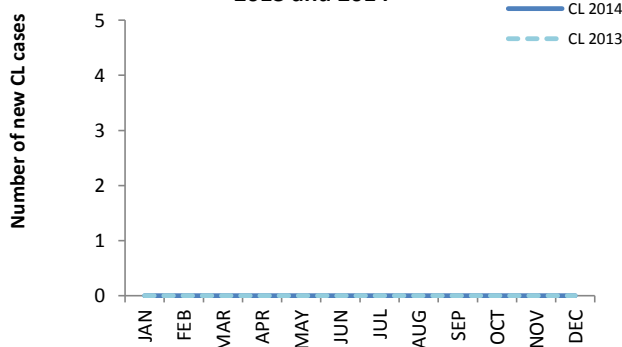
	VL	CL	PKDL	MCL
Endemicity status:	Endemic	Endemic	Non endemic	Non endemic
Number of new cases (incidence):	30	5423	N/A	N/A
Number of relapse cases:	No data	No data	N/A	N/A
Total number of cases:	30	5423	N/A	N/A
Imported cases (#, %):	No data	No data	No data	No data
Gender distribution (% F):	No data	No data	N/A	N/A
Age group distribution (% <5/5-14/>14):	No data	No data	No data	N/A
Incidence rate (cases/10 000 population in endemic areas):	0.01 ^a	5.42	N/A	N/A
Number of endemic 3rd sub-national administrative level divisions (n):	No data	328	N/A	N/A
Population at risk ¹ (% n/total):	No data	26% (10005224/39208000)	N/A	N/A
Was there any outbreak?	No	No	N/A	N/A
Number of new ² foci:	0	0	N/A	N/A

N/A = not applicable VL = visceral leishmaniasis CL = cutaneous leishmaniasis PKDL = post-kala-azar dermal leishmaniasis MCL = mucocutaneous leishmaniasis

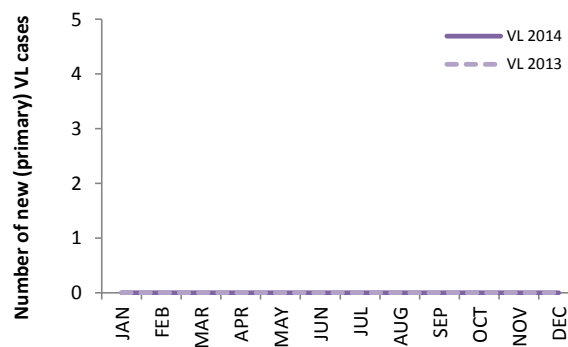
Monthly distribution of new cases January-December

2014	JAN	FEB	MAR	APR	MAY	JUN	JUL	AUG	SEP	OCT	NOV	DEC
VL	No data	No data	No data	No data	No data	No data	No data	No data	No data	No data	No data	No data
CL	No data	No data	No data	No data	No data	No data	No data	No data	No data	No data	No data	No data

Number of new CL cases reported by month in 2013 and 2014*

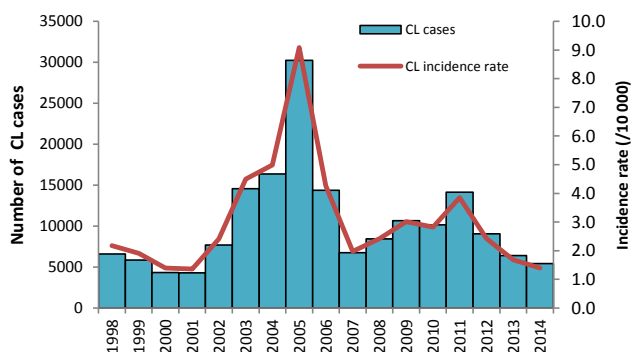


Number of new (primary) VL cases reported by month in 2013 and 2014*

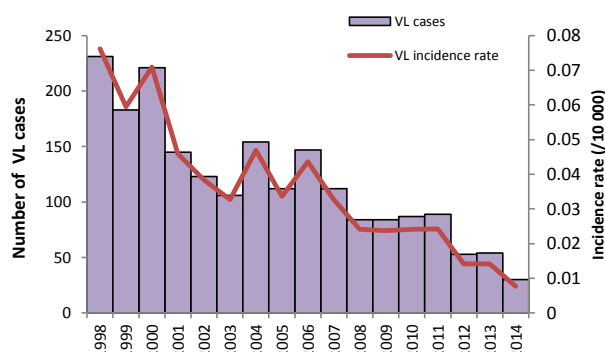


Incidence rate/10 000 population and number of new CL (left) and new (primary) VL (right) cases from 1998 to 2014

Number of cases and incidence rate³ of CL



Number of cases and incidence rate³ of VL



^a For VL, the incidence rate was calculated for the total population

* No data available

¹ Defined as "Number of people living in 3rd sub-national administrative level endemic areas"

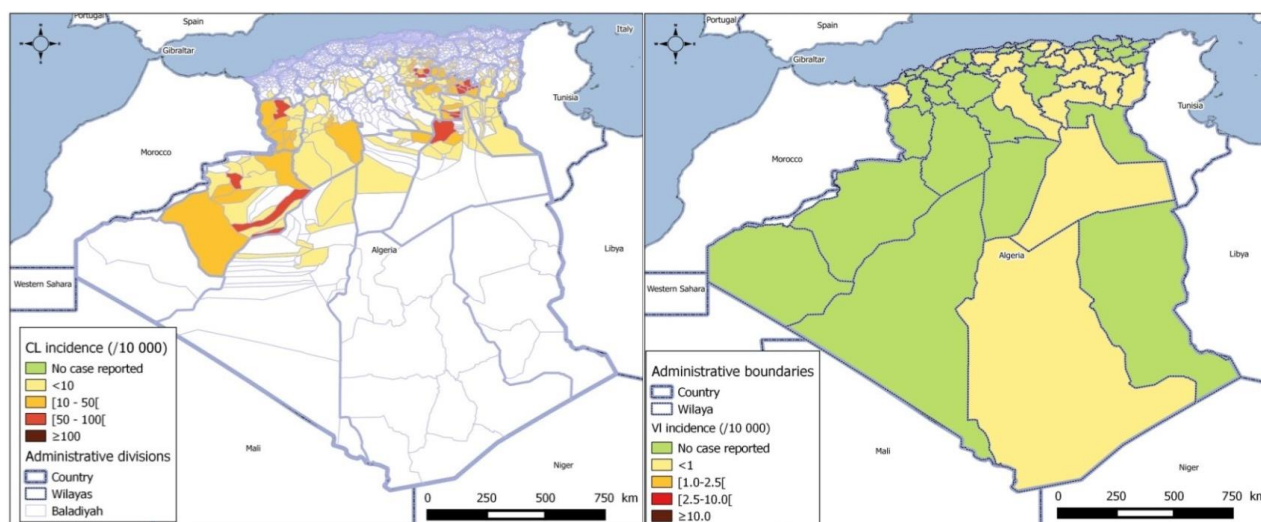
³ Incidence rate at the national level

² For this reporting period, an area at the 3rd sub-national administrative level reporting cases for the first time ever

Distribution of new CL (left) and new (primary) VL (right) cases

Incidence of CL in Algeria in 2014 at baladiyah level per 10 000 population

Incidence of VL in Algeria in 2014 at wilaya level per 10 000 population



The boundaries and names shown and the designations used on this map do not imply the expression of any opinion whatsoever on the part of the World Health Organization concerning the legal status of any country, territory, city or area or of its authorities, or concerning the delimitation of its frontiers or boundaries. Dotted and dashed lines on maps represent approximate border lines for which there may not yet be full agreement.

Map production: WHO/HTM/NTD/IDM

Control and surveillance

Year Leishmaniasis National Control Programme (LNCP) was established:	2006	Year latest national guidelines were published:	2010
Type of surveillance:	Integrated	Is leishmaniasis a notifiable disease (mandatory reporting)?	Yes
Is there a vector control programme?	Yes	Is there a reservoir host control programme?	No
Type of insecticide used for IRS:	Pyrethroids	Number of leishmaniasis health facilities:	488

Diagnosis

	VL	CL	PKDL	MCL
Number of people screened actively for:	No data	No data	N/A	N/A
Number of people screened passively for:	No data	No data	N/A	N/A
VL cases diagnosed by RDT* (%, # RDT+/total VL cases):	No data	N/A	N/A	N/A
Proportion of positive RDT* (%, # RDT+/total RDT):	No data	N/A	N/A	N/A
Cases diagnosed by direct exam (parasitology) (% , # slides +/total cases):	No data	100% (5423/ 5423)	N/A	N/A
Proportion of positive slides (%, # slides +/total slides):	No data	100% (5423/ 5423)	N/A	N/A
Cases diagnosed clinically (%, # clinical cases/total cases):	No data	0	N/A	N/A
Percentage of cases with HIV-VL coinfection:	No data	N/A	No data	N/A

* These indicators apply only for new (primary) VL cases

VL = visceral leishmaniasis

CL = cutaneous leishmaniasis PKDL = post-kala-azar dermal leishmaniasis

N/A = not applicable

RDT = rapid diagnostic test

HIV = human immunodeficiency virus

MCL = mucocutaneous leishmaniasis

Treatment and medicines

Is treatment provided free of charge in the public sector?	Yes
Antileishmanial medicines included in the national List of Essential Medicines:	Amphotericin B deoxycholate, liposomal amphotericin B, meglumine antimoniate

TREATMENT OUTCOME

VL

Proportion of relapse cases: ⁴	No data
Initial cure rate:	No data
Failure ⁵ rate:	No data
Case-fatality rate:	No data

⁴ A relapse case in this country is defined as: No definition available

⁵ A failure case in this country is defined as: No definition available